

## Product Datasheet

### SNCA Antibody (orb1238657)

## Description

## SNCA Antibody

### Species/Host

Rabbit

### Reactivity

Human, Mouse, Rat

### Conjugation

Unconjugated

### Tested Applications

ELISA, IF, IHC-P, WB

### Immunogen

SNCA antibody was raised against a 19 amino acid peptide near the carboxy terminus of human SNCA. The immunogen is located within the last 50 amino acids of SNCA.

### Target

SNCA

### Preservatives

SNCA antibody is supplied in PBS containing 0.02% sodium azide.

### Form/Appearance

Liquid

### Concentration

1 mg/mL

### Storage

SNCA antibody can be stored at 4°C for three months and -20°C, stable for up to one year.

### Note

For research use only

### Application notes

SNCA antibody can be used for detection of SNCA by Western blot at 1 - 2 µg/ml. Antibody can also be used for Immunohistochemistry starting at 5 µg/mL. For immunofluorescence start at 20 µg/mL. Antibody validated: Western Blot in human and mouse samples; Immunohistochemistry in rat samples and Immunofluorescence in rat samples. All other applications and species not yet tested.

### Isotype

IgG

### Clonality

Polyclonal

### MW

Predicted: 12 kDa Observed: 16 kDa

### Uniprot ID

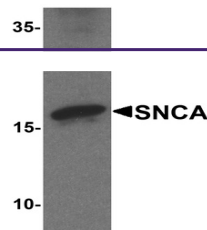
[P37840](#)

### NCBI

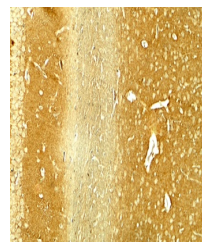
[NP\\_000336](#)

### Dilution Range

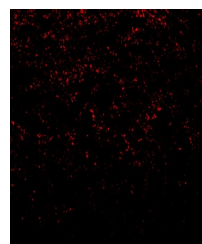
SNCA antibody can be used for detection of SNCA by Western blot at 1 - 2 µg/ml. Antibody can also be used for Immunohistochemistry starting at 5 µg/mL. For immunofluorescence start at 20 µg/mL. Antibody validated: Western Blot in human and mouse samples; Immunohistochemistry in rat samples and Immunofluorescence in rat samples. All other applications and species not yet tested.



Western blot analysis of SNCA in mouse c...



Immunohistochemistry of SNCA in rat brain...



Immunofluorescence of SNCA in rat brain ...