

## Product Datasheet

### TTYH1 Antibody (orb1238649)

## Description

TTYH1 Antibody

### Species/Host

Rabbit

### Reactivity

Human

### Conjugation

Unconjugated

### Tested

ELISA, ICC, WB

### Applications

### Immunogen

TTYH1 antibody was raised against a 17 amino acid synthetic peptide near the carboxy terminus of human TTYH1. The immunogen is located within the last 50 amino acids of TTYH1.

### Target

TTYH1

### Preservatives

TTYH1 Antibody is supplied in PBS containing 0.02% sodium azide.

### Form/Appearance

Liquid

### Concentration

1 mg/mL

### Storage

TTYH1 antibody can be stored at 4°C for three months and -20°C, stable for up to one year. As with all antibodies care should be taken to avoid repeated freeze thaw cycles. Antibodies should not be exposed to prolonged high temperatures.

### Note

For research use only

### Application notes

TTYH1 antibody can be used for detection of TTYH1 by Western blot at 1 - 2 µg/mL. Antibody can also be used for immunocytochemistry starting at 5 µg/mL. Antibody validated: Western Blot in human samples and Immunocytochemistry in human samples. All other applications and species not yet tested.

### Isotype

IgG

### Clonality

Polyclonal

### Uniprot ID

[Q9H313](#)

### NCBI

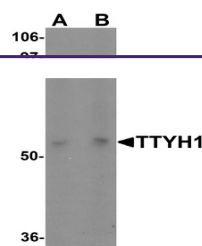
[NP\\_001005367](#)

### Dilution Range

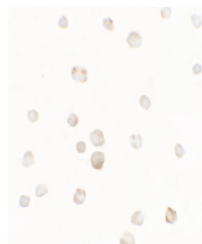
TTYH1 antibody can be used for detection of TTYH1 by Western blot at 1 - 2 µg/mL. Antibody can also be used for immunocytochemistry starting at 5 µg/mL. Antibody validated: Western Blot in human samples and Immunocytochemistry in human samples. All other applications and species not yet tested.

### Expiration Date

12 months from date of receipt.



Western blot analysis of TTYH1 in Raji c...



Immunocytochemistry of TTYH1 in Raji cel...