

Product Datasheet

TRPC6 Antibody (orb1238605)

Description

TRPC6 Antibody

Species/Host

Rabbit

Reactivity

Human, Mouse, Rat

Conjugation

Unconjugated

Tested

ELISA, IF, IHC-P, WB

Applications

Immunogen

TRPC6 antibody was raised against a 14 amino acid synthetic peptide from near the carboxy terminus of human TRPC6. The immunogen is located within the last 50 amino acids of TRPC6.

Target

TRPC6

Preservatives

TRPC6 Antibody is supplied in PBS containing 0.02% sodium azide.

Form/Appearance

Liquid

Concentration

1 mg/mL

Storage

TRPC6 antibody can be stored at 4°C for three months and -20°C, stable for up to one year. As with all antibodies care should be taken to avoid repeated freeze thaw cycles. Antibodies should not be exposed to prolonged high temperatures.

Note

For research use only

Application notes

TRPC6 antibody can be used for the detection of TRPC6 by Western blot at 0.5 - 2 µg/mL. Antibody can also be used for immunohistochemistry starting at 10 µg/mL. For immunofluorescence start at 20 µg/mL. Antibody validated: Western Blot in mouse samples; Immunohistochemistry in mouse samples and Immunofluorescence in mouse samples. All other applications and species not yet tested.

Isotype

IgG

Clonality

Polyclonal

MW

Predicted: 100, 102 kDa Observed: 93 kDa

Uniprot ID

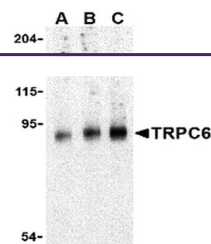
[Q9Y210](#)

NCBI

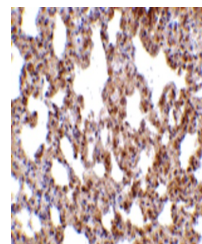
[AAH93658](#)

Dilution Range

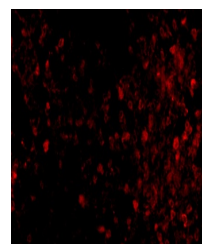
TRPC6 antibody can be used for the detection of TRPC6 by Western blot at 0.5 - 2 µg/mL. Antibody can also be used for immunohistochemistry starting at 10 µg/mL. For immunofluorescence start at 20 µg/mL. Antibody validated: Western Blot in mouse



Western blot analysis of TRPC6 in mouse ...



Immunohistochemistry of TRPC6 in mouse l...



Immunofluorescence of TRPC6 in Mouse Lun...