

Product Datasheet

WDR18 Antibody (orb1238597)

Description

WDR18 Antibody

Species/Host

Rabbit

Reactivity

Human, Mouse, Rat

Conjugation

Unconjugated

Tested

ELISA, IHC-P, WB

Applications

Immunogen

WDR18 antibody was raised against a 17 amino acid synthetic peptide near the carboxy terminus of human WDR18. The immunogen is located within the last 50 amino acids of WDR18.

Target

WDR18

Preservatives

WDR18 Antibody is supplied in PBS containing 0.02% sodium azide.

Form/Appearance

Liquid

Concentration

1 mg/mL

Storage

WDR18 antibody can be stored at 4°C for three months and -20°C, stable for up to one year. As with all antibodies care should be taken to avoid repeated freeze thaw cycles. Antibodies should not be exposed to prolonged high temperatures.

Note

For research use only

Application notes

WDR18 antibody can be used for detection of WDR18 by Western blot at 0.5 - 1 µg/mL. Antibody can also be used for immunohistochemistry starting at 2.5 µg/mL. For immunofluorescence start at 2.5 µg/mL. Antibody validated: Western Blot in rat samples and Immunohistochemistry in human samples. All other applications and species not yet tested.

Isotype

IgG

Clonality

Polyclonal

Uniprot ID

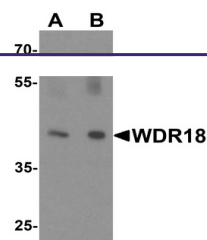
[Q9BV38](#)

NCBI

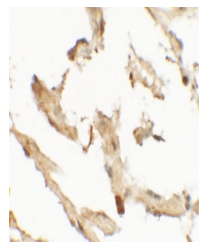
[NP_077005](#)

Dilution Range

WDR18 antibody can be used for detection of WDR18 by Western blot at 0.5 - 1 µg/mL. Antibody can also be used for immunohistochemistry starting at 2.5 µg/mL. For immunofluorescence start at 2.5 µg/mL. Antibody validated: Western Blot in rat samples and Immunohistochemistry in human



Western blot analysis of WDR18 in rat lung tissue.



Immunohistochemistry of WDR18 in human lung tissue.