

Product Datasheet

WDR61 Antibody (orb1238595)

Description

WDR61 Antibody

Species/Host

Rabbit

Reactivity

Human, Mouse, Rat

Conjugation

Unconjugated

Tested Applications

ELISA, IF, IHC-P, WB

Immunogen

WDR61 antibody was raised against a 14 amino acid peptide near the amino terminus of human WDR61. The immunogen is located within the first 50 amino acids of WDR61.

Target

WDR61

Preservatives

WDR61 antibody is supplied in PBS containing 0.02% sodium azide.

Form/Appearance

Liquid

Concentration

1 mg/mL

Storage

WDR61 antibody can be stored at 4°C for three months and -20°C, stable for up to one year.

Note

For research use only

Application notes

WDR61 antibody can be used for detection of WDR61 by Western blot at 1 - 2 µg/ml. Antibody can also be used for immunohistochemistry starting at 5 µg/mL. For immunofluorescence start at 20 µg/mL. Antibody validated: Western Blot in human samples; Immunohistochemistry in mouse samples and Immunofluorescence in mouse samples. All other applications and species not yet tested.

Isotype

IgG

Clonality

Polyclonal

MW

Predicted: 34 kDa Observed: 30 kDa

Uniprot ID

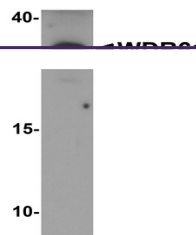
[Q9GZS3](#)

NCBI

[NP_079510](#)

Dilution Range

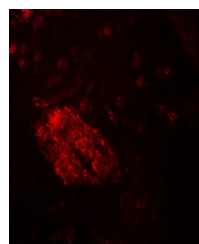
WDR61 antibody can be used for detection of WDR61 by Western blot at 1 - 2 µg/ml. Antibody can also be used for immunohistochemistry starting at 5 µg/mL. For immunofluorescence start at 20 µg/mL. Antibody validated: Western Blot in human samples; Immunohistochemistry in mouse samples and Immunofluorescence in mouse samples. All other applications and species not yet tested.



Western blot analysis of WDR61 in SK-N-S...



Immunohistochemistry of WDR61 in mouse brain tissue.



Immunofluorescence of WDR61 in mouse brain tissue.