

## Product Datasheet

### WFDC2 Antibody (orb1238592)

## Description

## WFDC2 Antibody

### Species/Host

Rabbit

### Reactivity

Human

### Conjugation

Unconjugated

### Tested

ELISA, IF, IHC-P, WB

### Applications

### Immunogen

WFDC2 antibody was raised against a 16 amino acid peptide near the amino terminus of human WFDC2. The immunogen is located within the first 50 amino acids of WFDC2 .

### Target

WFDC2

### Preservatives

WFDC2 Antibody is supplied in PBS containing 0.02% sodium azide.

### Form/Appearance

Liquid

### Concentration

1 mg/mL

### Storage

WFDC2 antibody can be stored at 4°C for three months and -20°C, stable for up to one year.

### Note

For research use only

### Application notes

WFDC2 antibody can be used for detection of WFDC2 by Western blot at 1 - 2 µg/ml. Antibody validated: Western Blot in human samples; Immunohistochemistry in human samples and Immunofluorescence in human samples. All other applications and species not yet tested.

### Isotype

IgG

### Clonality

Polyclonal

### MW

Predicted: 14 kDa Observed: 20kDa

### Uniprot ID

[Q14508](#)

### NCBI

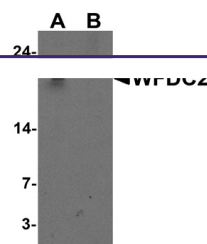
[NP\\_006094](#)

### Dilution Range

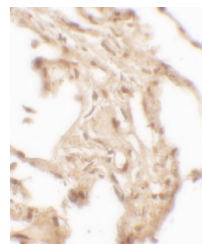
WFDC2 antibody can be used for detection of WFDC2 by Western blot at 1 - 2 µg/ml. Antibody validated: Western Blot in human samples; Immunohistochemistry in human samples and Immunofluorescence in human samples. All other applications and species not yet tested.

### Expiration Date

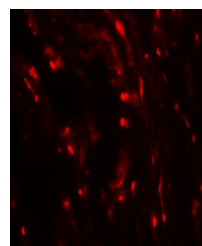
12 months from date of receipt.



Western blot analysis of WFDC2 in A549 c...



Immunohistochemistry of WFDC2 in human I...



Immunofluorescence of WFDC2 in human lun...