

## Product Datasheet

### WWC1 Antibody (orb1238585)

## Description

## WWC1 Antibody

### Species/Host

Rabbit

### Reactivity

Human, Mouse, Rat

### Conjugation

Unconjugated

### Tested Applications

ELISA, IF, IHC-P, WB

### Immunogen

WWC1 antibody was raised against an 18 amino acid peptide near the amino terminus of human WWC1. The immunogen is located within amino acids 60 - 110 of WWC1.

### Target

WWC1

### Preservatives

WWC1 antibody is supplied in PBS containing 0.02% sodium azide.

### Form/Appearance

Liquid

### Concentration

1 mg/mL

### Storage

WWC1 antibody can be stored at 4°C for three months and -20°C, stable for up to one year.

### Note

For research use only

### Application notes

WWC1 antibody can be used for detection of WWC1 by Western blot at 1 - 2 µg/ml. Antibody can also be used for immunohistochemistry starting at 5 µg/mL. For immunofluorescence start at 20 µg/mL. Antibody validated: Western Blot in human samples; Immunohistochemistry in mouse samples and Immunofluorescence in mouse samples. All other applications and species not yet tested.

### Isotype

IgG

### Clonality

Polyclonal

### MW

Predicted: 123 kDa Observed: 110 kDa

### Uniprot ID

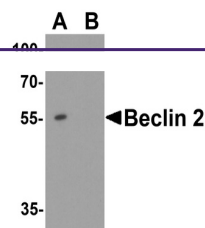
[Q8IX03](#)

### NCBI

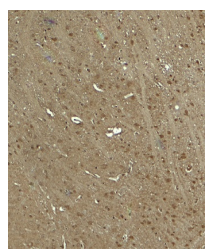
[NP\\_001155133](#)

### Dilution Range

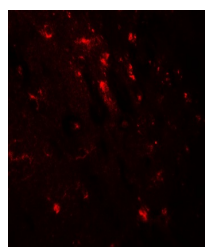
WWC1 antibody can be used for detection of WWC1 by Western blot at 1 - 2 µg/ml. Antibody can also be used for immunohistochemistry starting at 5 µg/mL. For immunofluorescence start at 20 µg/mL. Antibody validated: Western Blot in human samples; Immunohistochemistry in mouse samples and Immunofluorescence in mouse samples. All other applications and species not yet tested.



Western blot analysis of WWC1 in human brain tissue.



Immunohistochemistry of WWC1 in mouse brain tissue.



Immunofluorescence of WWC1 in mouse brain tissue.