

## Product Datasheet

### XAF1 Antibody (orb1238583)

## Description

XAF1 Antibody

## Species/Host

Rabbit

## Reactivity

Human, Mouse

## Conjugation

Unconjugated

## Tested

ELISA, IF, IHC-P, WB

## Applications

## Immunogen

XAF-1 antibody was raised against a synthetic peptide corresponding to amino acids at the C-terminus of human XAF-1. The immunogen is located within the last 50 amino acids of XAF-1.

## Target

XAF1

## Preservatives

XAF-1 Antibody is supplied in PBS containing 0.02% sodium azide.

## Form/Appearance

Liquid

## Concentration

1 mg/mL

## Storage

XAF-1 antibody can be stored at 4°C for three months and -20°C, stable for up to one year. As with all antibodies care should be taken to avoid repeated freeze thaw cycles. Antibodies should not be exposed to prolonged high temperatures.

## Note

For research use only

## Application notes

XAF-1 antibody can be used for the detection of XAF-1 by Western blot at 0.5 to 2 µg/mL. Antibody can also be used for immunohistochemistry starting at 2 µg/mL. For immunofluorescence start at 10 µg/mL. Antibody validated: Western Blot in human samples; Immunohistochemistry in human samples and Immunofluorescence in human samples. All other applications and species not yet tested.

## Isotype

IgG

## Clonality

Polyclonal

## MW

Predicted: 35 kDa Observed: 32 kDa

## Uniprot ID

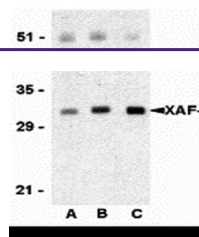
[Q6GPH4](#)

## NCBI

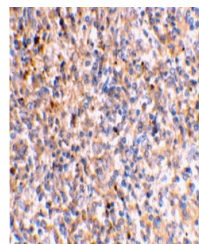
[CAA68030](#)

## Dilution Range

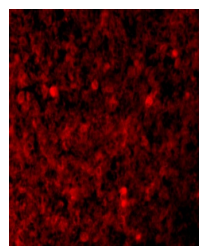
XAF-1 antibody can be used for the detection of XAF-1 by Western blot at 0.5 to 2 µg/mL. Antibody can also be used for immunohistochemistry starting at 2 µg/mL. For immunofluorescence start at 10 µg/mL. Antibody validated: Western Blot in human



Western blot analysis of XAF-1 in human ...



Immunohistochemical staining of human sp...



Immunofluorescence of XAF-1 in Human Spl...