

Product Datasheet

Pkdcc Antibody (orb1238577)

Description

Pkdcc Antibody

Species/Host

Rabbit

Reactivity

Human, Mouse, Rat

Conjugation

Unconjugated

Tested

ELISA, IF, IHC-P, WB

Applications

Immunogen

VLK antibody was raised against a 15 amino acid synthetic peptide from near the center of human VLK. The immunogen is located within amino acids 320 - 370 of VLK.

Target

Pkdcc

Preservatives

VLK Antibody is supplied in PBS containing 0.02% sodium azide.

Form/Appearance

Liquid

Concentration

1 mg/mL

Storage

VLK antibody can be stored at 4°C for three months and -20°C, stable for up to one year. As with all antibodies care should be taken to avoid repeated freeze thaw cycles. Antibodies should not be exposed to prolonged high temperatures.

Note

For research use only

Application notes

VLK antibody can be used for detection of VLK by Western blot at 0.5 µg/mL. Antibody can also be used for immunohistochemistry starting at 2.5 µg/mL. For immunofluorescence start at 5 µg/mL. Antibody validated: Western Blot in human samples; Immunohistochemistry in rat samples and Immunofluorescence in rat samples. All other applications and species not yet tested.

Isotype

IgG

Clonality

Polyclonal

MW

Predicted: 32, 54 kDa Observed: 31, 55 kDa

Uniprot ID

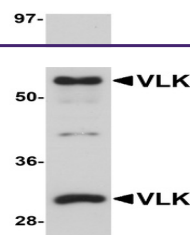
[Q5RJI4](#)

NCBI

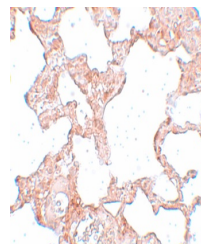
[NP_612379](#)

Dilution Range

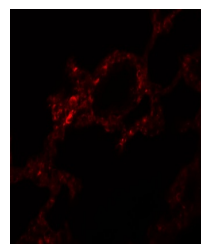
VLK antibody can be used for detection of VLK by Western blot at 0.5 µg/mL. Antibody can also be used for immunohistochemistry starting at 2.5 µg/mL. For immunofluorescence start at 5 µg/mL. Antibody validated: Western Blot in human



Western blot analysis of VLK in human lu...



Immunohistochemistry of VLK in rat lung ...



Immunofluorescence of VLK in rat lung ti...