

Product Datasheet

XKR8 Antibody (orb1238576)

Description

XKR8 Antibody

Species/Host

Rabbit

Reactivity

Human

Conjugation

Unconjugated

Tested

ELISA, IF, IHC-P, WB

Applications

Immunogen

XKR8 antibody was raised against a 15 amino acid peptide near the carboxy terminus of human XKR8. The immunogen is located within the last 50 amino acids of XKR8.

Target

XKR8

Preservatives

XKR8 antibody is supplied in PBS containing 0.02% sodium azide.

Form/Appearance

Liquid

Concentration

1 mg/mL

Storage

XKR8 antibody can be stored at 4°C for three months and -20°C, stable for up to one year.

Note

For research use only

Application notes

XKR8 antibody can be used for detection of XKR8 by Western blot at 1 - 2 µg/ml. Antibody can also be used for immunohistochemistry starting at 5 µg/mL. For immunofluorescence start at 20 µg/mL. Antibody validated: Western Blot in human samples; Immunohistochemistry in human samples and Immunofluorescence in human samples. All other applications and species not yet tested.

Isotype

IgG

Clonality

Polyclonal

MW

Predicted: 43 kDa Observed: 47 kDa

Uniprot ID

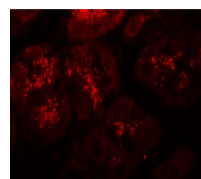
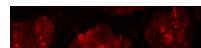
[Q9H6D3](#)

NCBI

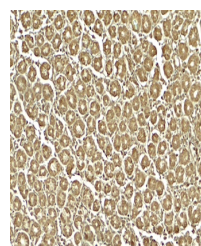
[NP_060523](#)

Dilution Range

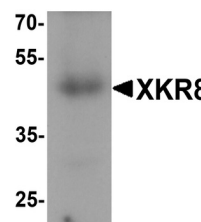
XKR8 antibody can be used for detection of XKR8 by Western blot at 1 - 2 µg/ml. Antibody can also be used for immunohistochemistry starting at 5 µg/mL. For immunofluorescence start at 20 µg/mL. Antibody validated: Western Blot in human samples; Immunohistochemistry in human samples and Immunofluorescence in human samples. All other applications and species not yet tested.



Immunofluorescence of XKR8 in human stomach...



Immunohistochemistry of XKR8 in human stomach...



Western blot analysis of XKR8 in human samples...