

Product Datasheet

YPEL4 Antibody (orb1238571)

Description

YPEL4 Antibody

Species/Host

Rabbit

Reactivity

Human, Mouse

Conjugation

Unconjugated

Tested

ELISA, ICC, IF, WB

Applications
Immunogen

YPEL4 antibody was raised against a 12 amino acid synthetic peptide near the amino terminus of human YPEL4. The immunogen is located within the first 50 amino acids of YPEL4.

Target

YPEL4

Preservatives

YPEL4 Antibody is supplied in PBS containing 0.02% sodium azide.

Form/Appearance

Liquid

Concentration

1 mg/mL

Storage

YPEL4 antibody can be stored at 4°C for three months and -20°C, stable for up to one year. As with all antibodies care should be taken to avoid repeated freeze thaw cycles. Antibodies should not be exposed to prolonged high temperatures.

Note

For research use only

Application notes

YPEL4 antibody can be used for detection of YPEL4 by Western blot at 1 µg/mL. Antibody validated: Western Blot in mouse samples; Immunocytochemistry in human samples and Immunofluorescence in human samples. All other applications and species not yet tested.

Isotype

IgG

Clonality

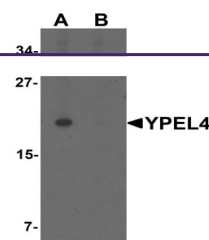
Polyclonal

Uniprot ID
Q96NS1
NCBI
NP_659445
Dilution Range

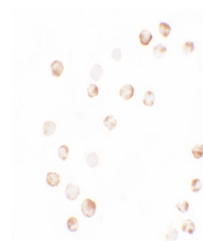
YPEL4 antibody can be used for detection of YPEL4 by Western blot at 1 µg/mL. Antibody validated: Western Blot in mouse samples; Immunocytochemistry in human samples and Immunofluorescence in human samples. All other applications and species not yet tested.

Expiration Date

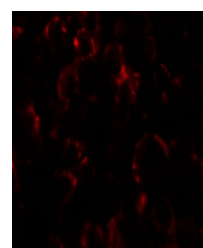
12 months from date of receipt.



Western blot analysis of YPEL4 in SW480 ...



Immunocytochemistry of YPEL4 in SW480 ce...



Immunofluorescence of YPEL4 in SW480 cel...