

Product Datasheet

ZBP1 Antibody (orb1238568)

Description

ZBP1 Antibody

Species/Host

Rabbit

Reactivity

Human, Mouse, Rat

Conjugation

Unconjugated

Tested

ELISA, IF, IHC-P, WB

Applications

Immunogen

ZBP1 antibody was raised against an 18 amino acid synthetic peptide from near the carboxy terminus of human ZBP1. The immunogen is located within the last 50 amino acids of ZBP1.

Target

ZBP1

Preservatives

ZBP1 Antibody is supplied in PBS containing 0.02% sodium azide.

Form/Appearance

Liquid

Concentration

1 mg/mL

Storage

ZBP1 antibody can be stored at 4°C for three months and -20°C, stable for up to one year. As with all antibodies care should be taken to avoid repeated freeze thaw cycles. Antibodies should not be exposed to prolonged high temperatures.

Note

For research use only

Application notes

ZBP1 antibody can be used for the detection of ZBP1 by Western blot at 0.5 - 2 µg/mL. Antibody can also be used for immunohistochemistry starting at 2.5 µg/mL. For immunofluorescence start at 20 µg/mL. Antibody validated: Western Blot in mouse samples; Immunohistochemistry in human samples and Immunofluorescence in human samples. All other applications and species not yet tested.

Isotype

IgG

Clonality

Polyclonal

MW

Predicted: 39, 45 kDa Observed: 42 kDa

Uniprot ID

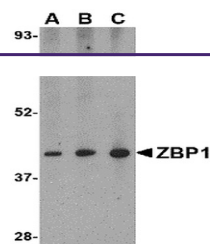
[Q9H171](#)

NCBI

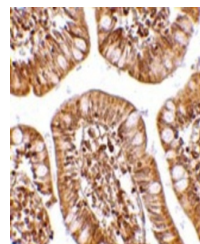
[EAW75510](#)

Dilution Range

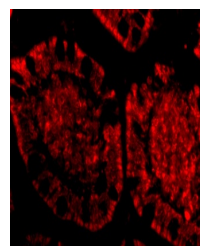
ZBP1 antibody can be used for the detection of ZBP1 by Western blot at 0.5 - 2 µg/mL. Antibody can also be used for immunohistochemistry starting at 2.5 µg/mL. For immunofluorescence start at 20 µg/mL. Antibody validated: Western Blot in mouse



Western blot analysis of ZBP1 in mouse s...



Immunohistochemistry of ZBP1 in human sm...



Immunofluorescence of ZBP1 in Human Smal...