

Product Datasheet

ZBTB6 Antibody (orb1238562)

Description

ZBTB6 Antibody

Species/Host

Rabbit

Reactivity

Human, Mouse

Conjugation

Unconjugated

Tested

ELISA, ICC, IF, WB

Applications

Immunogen

ZBTB6 antibody was raised against a 15 amino acid synthetic peptide near the center of human ZBTB6. The immunogen is located within amino acids 180 - 230 of ZBTB6.

Target

ZBTB6

Preservatives

ZBTB6 Antibody is supplied in PBS containing 0.02% sodium azide.

Form/Appearance

Liquid

Concentration

1 mg/mL

Storage

ZBTB6 antibody can be stored at 4°C for three months and -20°C, stable for up to one year. As with all antibodies care should be taken to avoid repeated freeze thaw cycles. Antibodies should not be exposed to prolonged high temperatures.

Note

For research use only

Application notes

ZBTB6 antibody can be used for detection of ZBTB6 by Western blot at 1 µg/mL. Antibody can also be used for immunocytochemistry starting at 5 µg/mL. For immunofluorescence start at 5 µg/mL. Antibody validated: Western Blot in mouse samples; Immunocytochemistry in mouse samples and Immunofluorescence in mouse samples. All other applications and species not yet tested.

Isotype

IgG

Clonality

Polyclonal

Uniprot ID

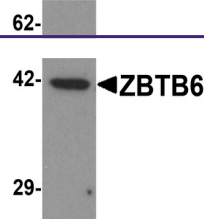
[Q15916](#)

NCBI

[AAH37282](#)

Dilution Range

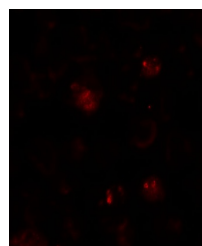
ZBTB6 antibody can be used for detection of ZBTB6 by Western blot at 1 µg/mL. Antibody can also be used for immunocytochemistry starting at 5 µg/mL. For immunofluorescence start at 5 µg/mL. Antibody validated: Western Blot in mouse samples; Immunocytochemistry in mouse samples and



Western blot analysis of ZBTB6 in EL4 cells...



Immunocytochemistry of ZBTB6 in EL4 cells...



Immunofluorescence of ZBTB6 in EL4 cells...