

Product Datasheet

ZFYVE21 Antibody (orb1238553)

Description

ZFYVE21 Antibody

Species/Host

Rabbit

Reactivity

Human, Mouse, Rat

Conjugation

Unconjugated

Tested

ELISA, IF, WB

Applications

Immunogen

ZF21 antibody was raised against a 15 amino acid synthetic peptide near the amino terminus of human ZF21. The immunogen is located within the first 50 amino acids of ZF21.

Target

ZFYVE21

Preservatives

ZF21 Antibody is supplied in PBS containing 0.02% sodium azide.

Form/Appearance

Liquid

Concentration

1 mg/mL

Storage

ZF21 antibody can be stored at 4°C for three months and -20°C, stable for up to one year. As with all antibodies care should be taken to avoid repeated freeze thaw cycles. Antibodies should not be exposed to prolonged high temperatures.

Note

For research use only

Application notes

ZF21 antibody can be used for detection of ZF21 by Western blot at 1 µg/mL. For immunofluorescence start at 20 µg/mL. Antibody validated: Western Blot in mouse samples and Immunofluorescence in human samples. All other applications and species not yet tested.

Isotype

IgG

Clonality

Polyclonal

Uniprot ID

[Q9BQ24](#)

NCBI

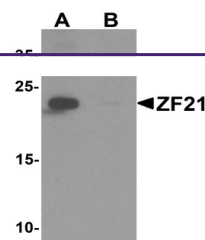
[NP_001185882](#)

Dilution Range

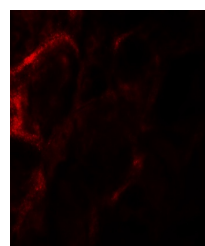
ZF21 antibody can be used for detection of ZF21 by Western blot at 1 µg/mL. For immunofluorescence start at 20 µg/mL. Antibody validated: Western Blot in mouse samples and Immunofluorescence in human samples. All other applications and species not yet tested.

Expiration Date

12 months from date of receipt.



Western blot analysis of ZF21 in 3T3 cells.



Immunofluorescence of ZF21 in human kidney.