

## Product Datasheet

### ZMIZ1 Antibody (orb1238547)

## Description

## ZMIZ1 Antibody

### Species/Host

Rabbit

### Reactivity

Human

### Conjugation

Unconjugated

### Tested

ELISA, ICC, IF, WB

### Applications

### Immunogen

ZIMP10 antibody was raised against a 15 amino acid synthetic peptide near the amino terminus of human ZIMP10. The immunogen is located within amino acids 90 - 140 of ZIMP10.

### Target

ZMIZ1

### Preservatives

ZIMP10 Antibody is supplied in PBS containing 0.02% sodium azide.

### Form/Appearance

Liquid

### Concentration

1 mg/mL

### Storage

ZIMP10 antibody can be stored at 4°C for three months and -20°C, stable for up to one year. As with all antibodies care should be taken to avoid repeated freeze thaw cycles. Antibodies should not be exposed to prolonged high temperatures.

### Note

For research use only

### Application notes

ZIMP10 antibody can be used for detection of ZIMP10 by Western blot at 0.5 µg/mL. Antibody can also be used for immunocytochemistry starting at 10 µg/mL. For immunofluorescence start at 20 µg/mL. Antibody validated: Western Blot in human samples; Immunocytochemistry in human samples and Immunofluorescence in human samples. All other applications and species not yet tested.

### Isotype

IgG

### Clonality

Polyclonal

### Uniprot ID

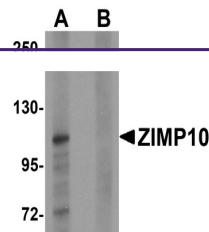
[Q9ULJ6](#)

### NCBI

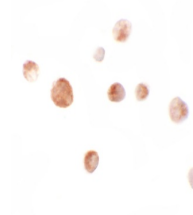
[NP\\_65071](#)

### Dilution Range

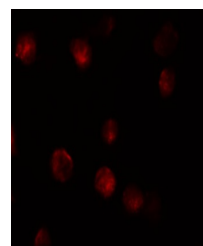
ZIMP10 antibody can be used for detection of ZIMP10 by Western blot at 0.5 µg/mL. Antibody can also be used for immunocytochemistry starting at 10 µg/mL. For immunofluorescence start at 20 µg/mL. Antibody validated: Western Blot in human samples; Immunocytochemistry in human samples and



Western blot analysis of ZIMP10 in K562 ...



Immunocytochemistry of ZIMP10 in K562 ce...



Immunofluorescence of ZIMP10 in K562 cel...