

## Product Datasheet

### SLC39A5 Antibody (orb1238537)

## Description

SLC39A5 Antibody

### Species/Host

Rabbit

### Reactivity

Human, Mouse

### Conjugation

Unconjugated

### Tested

ELISA, IF, IHC-P, WB

### Applications

### Immunogen

ZIP5 antibody was raised against a 17 amino acid synthetic peptide near the center of human ZIP5. The immunogen is located within amino acids 330 - 380 of ZIP5.

### Target

SLC39A5

### Preservatives

ZIP5 Antibody is supplied in PBS containing 0.02% sodium azide.

### Form/Appearance

Liquid

### Concentration

1 mg/mL

### Storage

ZIP5 antibody can be stored at 4°C for three months and -20°C, stable for up to one year. As with all antibodies care should be taken to avoid repeated freeze thaw cycles. Antibodies should not be exposed to prolonged high temperatures.

### Note

For research use only

### Application notes

ZIP5 antibody can be used for detection of ZIP5 by Western blot at 1 - 2 µg/mL. Antibody can also be used for immunohistochemistry starting at 2.5 µg/mL. For immunofluorescence start at 20 µg/mL. Antibody validated: Western Blot in human samples; Immunohistochemistry in human samples and Immunofluorescence in human samples. All other applications and species not yet tested.

### Isotype

IgG

### Clonality

Polyclonal

### Uniprot ID

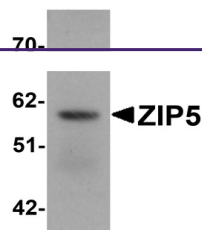
[Q6ZMH5](#)

### NCBI

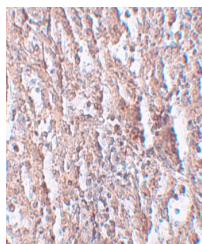
[NP\\_001128667](#)

### Dilution Range

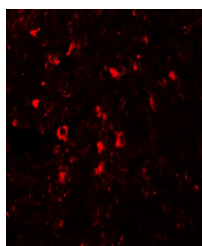
ZIP5 antibody can be used for detection of ZIP5 by Western blot at 1 - 2 µg/mL. Antibody can also be used for immunohistochemistry starting at 2.5 µg/mL. For immunofluorescence start at 20 µg/mL. Antibody validated: Western Blot in human samples; Immunohistochemistry in human samples



Western blot analysis of ZIP5 in human s...



Immunohistochemistry of ZIP5 in human sp...



Immunofluorescence of ZIP5 in human sple...