

Product Datasheet

ANKLE2 Antibody (orb1238504)

Description

ANKLE2 Antibody

Species/Host

Gallus

Reactivity

Human, Mouse, Rat

Conjugation

Unconjugated

Tested

ELISA, WB

Applications

Immunogen

ANKLE2 antibody was raised against a 19 amino acid synthetic peptide near the center of human ANKLE2. The immunogen is located within amino acids 280 - 330 of ANKLE2.

Target

ANKLE2

Preservatives

ANKLE2 Antibody is supplied in PBS containing 0.02% sodium azide.

Form/Appearance

Liquid

Concentration

1 mg/mL

Storage

ANKLE2 antibody can be stored at 4°C for three months and -20°C, stable for up to one year. As with all antibodies care should be taken to avoid repeated freeze thaw cycles. Antibodies should not be exposed to prolonged high temperatures.

Note

For research use only

Application notes

ANKLE2 antibody can be used for detection of ANKLE2 by Western blot at 1 - 2 µg/mL. Antibody validated: Western Blot in human samples. All other applications and species not yet tested.

Isotype

IgY

Clonality

Polyclonal

MW

Predicted: 121, 139, 145 kDa Observed: 121 kDa

Uniprot ID

[Q86XL3](#)

NCBI

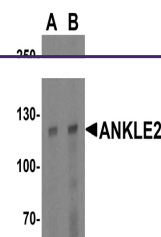
[AAH43157](#)

Dilution Range

ANKLE2 antibody can be used for detection of ANKLE2 by Western blot at 1 - 2 µg/mL. Antibody validated: Western Blot in human samples. All other applications and species not yet tested.

Expiration Date

12 months from date of receipt.



Western blot analysis of ANKLE2 in human...