

Product Datasheet

CCR8 Antibody (orb1238457)

Description

CCR8 Antibody

Species/Host

Rabbit

Reactivity

Human

Conjugation

Unconjugated

Tested

ELISA, WB

Applications

Immunogen

CCR8 antibody was raised against a 19 amino acid peptide near the center of human CCR8. The immunogen is located within amino acids 170 - 220 of CCR8.

Target

CCR8

Preservatives

CCR8 Antibody is supplied in PBS containing 0.02% sodium azide.

Form/Appearance

Liquid

Concentration

1 mg/ml

Storage

CCR8 antibody can be stored at 4°C for three months and -20°C, stable for up to one year. As with all antibodies care should be taken to avoid repeated freeze thaw cycles. Antibodies should not be exposed to prolonged high temperatures.

Note

For research use only

Application notes

CCR8 antibody can be used for detection of CCR8 by Western blot 0.5 µg/mL. An approximately 50 kDa band can be detected. Antibody validated: Western Blot in human samples. All other applications and species not yet tested.

Isotype

IgG

Clonality

Polyclonal

MW

50 kDa

Uniprot ID

U45983

NCBI

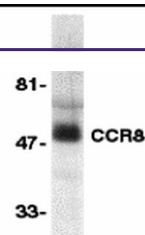
U45983

Dilution Range

CCR8 antibody can be used for detection of CCR8 by Western blot 0.5 µg/mL. An approximately 50 kDa band can be detected. Antibody validated: Western Blot in human samples. All other applications and species not yet tested.

Expiration Date

12 months from date of receipt.



Western blot analysis of CCR8 in human s...