

Product Datasheet

CD33 Antibody (orb1238456)

Description

CD33 Antibody

Species/Host

Rabbit

Reactivity

Human, Mouse, Rat

Conjugation

Unconjugated

Tested

ELISA, WB

Applications

Immunogen

CD33 antibody was raised against a 14 amino acid synthetic peptide near the center of human CD33. The immunogen is located within amino acids 180 - 230 of CD33.

Target

CD33

Preservatives

CD33 Antibody is supplied in PBS containing 0.02% sodium azide.

Form/Appearance

Liquid

Concentration

1 mg/mL

Storage

CD33 antibody can be stored at 4°C for three months and -20°C, stable for up to one year. As with all antibodies care should be taken to avoid repeated freeze thaw cycles. Antibodies should not be exposed to prolonged high temperatures.

Note

For research use only

Application notes

CD33 antibody can be used for detection of CD33 by Western blot at 1 - 2 µg/mL. Antibody validated: Western Blot in mouse samples. All other applications and species not yet tested.

Isotype

IgG

Clonality

Polyclonal

Uniprot ID

[P20138](#)

NCBI

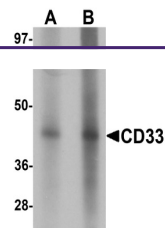
[NP_001763](#)

Dilution Range

CD33 antibody can be used for detection of CD33 by Western blot at 1 - 2 µg/mL. Antibody validated: Western Blot in mouse samples. All other applications and species not yet tested.

Expiration Date

12 months from date of receipt.



Western blot analysis of CD33 in 3T3 cel...