

Product Datasheet

DISP2 Antibody (orb1238423)

Description

DISP2 Antibody

Species/Host

Rabbit

Reactivity

Human, Mouse, Rat

Conjugation

Unconjugated

Tested

ELISA, WB

Applications

Immunogen

Disp2 antibody was raised against a 19 amino acid synthetic peptide from near the carboxy terminus of human Disp2. The immunogen is located within amino acids 1210 - 1260 of Disp2.

Target

DISP2

Preservatives

Disp2 Antibody is supplied in PBS containing 0.02% sodium azide.

Form/Appearance

Liquid

Concentration

1 mg/mL

Storage

Disp2 antibody can be stored at 4°C for three months and -20°C, stable for up to one year. As with all antibodies care should be taken to avoid repeated freeze thaw cycles. Antibodies should not be exposed to prolonged high temperatures.

Note

For research use only

Application notes

Disp2 antibody can be used for the detection of Disp2 by Western blot at 1 - 2 µg/mL. Antibody validated: Western Blot in rat samples. All other applications and species not yet tested.

Isotype

IgG

Clonality

Polyclonal

Uniprot ID

[A7MBM2](#)

NCBI

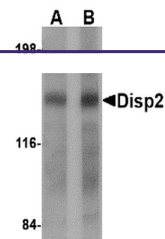
[A7MBM2](#)

Dilution Range

Disp2 antibody can be used for the detection of Disp2 by Western blot at 1 - 2 µg/mL. Antibody validated: Western Blot in rat samples. All other applications and species not yet tested.

Expiration Date

12 months from date of receipt.



Western blot analysis of Disp2 in rat br...