

Product Datasheet

GP6 Antibody (orb1238387)

Description

GP6 Antibody

Species/Host

Rabbit

Reactivity

Human, Mouse, Rat

Conjugation

Unconjugated

Tested

ELISA, WB

Applications

Immunogen

GPVI antibody was raised against a 18 amino acid synthetic peptide near the center of the human GPVI. The immunogen is located within amino acids 130 - 180 of GPVI.

Target

GP6

Preservatives

GPVI Antibody is supplied in PBS containing 0.02% sodium azide.

Form/Appearance

Liquid

Concentration

1 mg/mL

Storage

GPVI antibody can be stored at 4°C for three months and -20°C, stable for up to one year. As with all antibodies care should be taken to avoid repeated freeze thaw cycles. Antibodies should not be exposed to prolonged high temperatures.

Note

For research use only

Application notes

GPVI antibody can be used for detection of GPVI by Western blot at 1 µg/mL. Antibody validated: Western Blot in human samples. All other applications and species not yet tested.

Isotype

IgG

Clonality

Polyclonal

MW

Predicted: 37, 68 kDa Observed: 55 kDa

Uniprot ID

[Q9HCN6](#)

NCBI

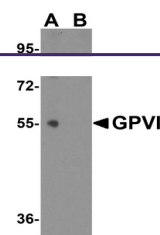
[NP_057447](#)

Dilution Range

GPVI antibody can be used for detection of GPVI by Western blot at 1 µg/mL. Antibody validated: Western Blot in human samples. All other applications and species not yet tested.

Expiration Date

12 months from date of receipt.



Western blot analysis of GPVI expression...