

Product Datasheet

SP110 Antibody (orb1238351)

Description

SP110 Antibody

Species/Host

Rabbit

Reactivity

Human, Mouse, Rat

Conjugation

Unconjugated

Tested

ELISA, WB

Applications

Immunogen

IPR1 antibody was raised against a 16 amino acid synthetic peptide near the amino terminus of the human IPR1. The immunogen is located within amino acids 70 - 120 of IPR1.

Target

SP110

Preservatives

IPR1 Antibody is supplied in PBS containing 0.02% sodium azide.

Form/Appearance

Liquid

Concentration

1 mg/mL

Storage

IPR1 antibody can be stored at 4°C for three months and -20°C, stable for up to one year. As with all antibodies care should be taken to avoid repeated freeze thaw cycles. Antibodies should not be exposed to prolonged high temperatures.

Note

For research use only

Application notes

Ipr1 antibody can be used for detection of Ipr1 by Western blot at 1 - 2 µg/mL. Antibody validated: Western Blot in human samples. All other applications and species not yet tested.

Isotype

IgG

Clonality

Polyclonal

Uniprot ID

[Q9HB58](#)

NCBI

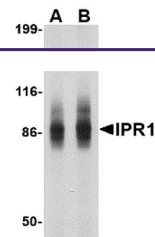
[NP_004501](#)

Dilution Range

Ipr1 antibody can be used for detection of Ipr1 by Western blot at 1 - 2 µg/mL. Antibody validated: Western Blot in human samples. All other applications and species not yet tested.

Expiration Date

12 months from date of receipt.



Western blot analysis of IPR1 in SW480 c...