

Product Datasheet

IRF2BP2 Antibody (orb1238348)

Description

IRF2BP2 Antibody

Species/Host

Rabbit

Reactivity

Human

Conjugation

Unconjugated

Tested

ELISA, IHC-P

Applications
Immunogen

IRF2BP2 antibody was raised against an 17 amino acid synthetic peptide near the amino terminus of human IRF2BP2. The immunogen is located within amino acids 150 - 200 of IRF2BP2.

Target

IRF2BP2

Preservatives

IRF2BP2 Antibody is supplied in PBS containing 0.02% sodium azide.

Form/Appearance

Liquid

Concentration

1 mg/mL

Storage

IRF2BP2 antibody can be stored at 4°C for three months and -20°C, stable for up to one year. As with all antibodies care should be taken to avoid repeated freeze thaw cycles. Antibodies should not be exposed to prolonged high temperatures.

Note

For research use only

Application notes

IRF2BP2 antibody can be used for detection of IRF2BP2 by immunohistochemistry at 5 µg/mL. Antibody validated: Immunohistochemistry in human samples. All other applications and species not yet tested.

Isotype

IgG

Clonality

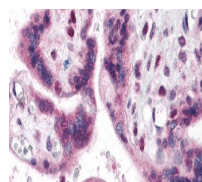
Polyclonal

Uniprot ID
[Q7Z5L9](#)
NCBI
[NP_892017](#)
Dilution Range

IRF2BP2 antibody can be used for detection of IRF2BP2 by immunohistochemistry at 5 µg/mL. Antibody validated: Immunohistochemistry in human samples. All other applications and species not yet tested.

Expiration Date

12 months from date of receipt.



Immunohistochemistry of IRF2BP2 in human...