

Product Datasheet

NSMCE2 Antibody (orb1238311)

Description

NSMCE2 Antibody

Species/Host

Rabbit

Reactivity

Human, Mouse, Rat

Conjugation

Unconjugated

Tested

ELISA, WB

Applications

Immunogen

MMS21 antibody was raised against a 15 amino acid synthetic peptide near the carboxy terminus of human MMS21. The immunogen is located within amino acids 170 - 220 of MMS21.

Target

NSMCE2

Preservatives

MMS21 Antibody is supplied in PBS containing 0.02% sodium azide.

Form/Appearance

Liquid

Concentration

1 mg/mL

Storage

MMS21 antibody can be stored at 4°C for three months and -20°C, stable for up to one year. As with all antibodies care should be taken to avoid repeated freeze thaw cycles. Antibodies should not be exposed to prolonged high temperatures.

Note

For research use only

Application notes

MMS21 antibody can be used for detection of MMS21 by Western blot at 0.5 - 1 µg/mL. Antibody validated: Western Blot in human samples. All other applications and species not yet tested.

Isotype

IgG

Clonality

Polyclonal

MW

Predicted: 27 kDa Observed: 30 kDa

Uniprot ID

[Q96MF7](#)

NCBI

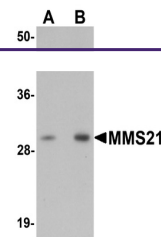
[NP_775956](#)

Dilution Range

MMS21 antibody can be used for detection of MMS21 by Western blot at 0.5 - 1 µg/mL. Antibody validated: Western Blot in human samples. All other applications and species not yet tested.

Expiration Date

12 months from date of receipt.



Western blot analysis of MMS21 in 293 ce...