

Product Datasheet

MYBPC1 Antibody (orb1238309)

Description

MYBPC1 Antibody

Species/Host

Rabbit

Reactivity

Human

Conjugation

Unconjugated

Tested

ELISA, IHC-P

Applications

Immunogen

MYBPC1 antibody was raised against a 12 amino acid synthetic peptide near the carboxy terminus of human MYBPC1. The immunogen is located within the last 50 amino acids of MYBPC1.

Target

MYBPC1

Preservatives

MYBPC1 Antibody is supplied in PBS containing 0.02% sodium azide.

Form/Appearance

Liquid

Concentration

1 mg/mL

Storage

MYBPC1 antibody can be stored at 4°C for three months and -20°C, stable for up to one year. As with all antibodies care should be taken to avoid repeated freeze thaw cycles. Antibodies should not be exposed to prolonged high temperatures.

Note

For research use only

Application notes

MYBPC1 antibody can be used for detection of MYBPC1 by immunohistochemistry at 5 µg/mL. For immunofluorescence start at 5 µg/mL. Antibody validated: Immunohistochemistry in human samples. All other applications and species not yet tested.

Isotype

IgG

Clonality

Polyclonal

Uniprot ID

[Q00872](#)

NCBI

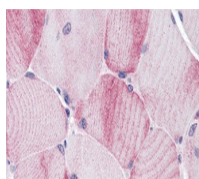
[NP_002456](#)

Dilution Range

MYBPC1 antibody can be used for detection of MYBPC1 by immunohistochemistry at 5 µg/mL. For immunofluorescence start at 5 µg/mL. Antibody validated: Immunohistochemistry in human samples. All other applications and species not yet tested.

Expiration Date

12 months from date of receipt.



Immunohistochemistry of MYBPC1 in human

...