

Product Datasheet

MYCT1 Antibody (orb1238308)

Description

MYCT1 Antibody

Species/Host

Rabbit

Reactivity

Human, Mouse, Rat

Conjugation

Unconjugated

Tested

ELISA, WB

Applications

Immunogen

MYCT1 antibody was raised against a 17 amino acid synthetic peptide near the carboxy terminus of human MYCT1. The immunogen is located within the last 50 amino acids of MYCT1.

Target

MYCT1

Preservatives

MYCT1 Antibody is supplied in PBS containing 0.02% sodium azide.

Form/Appearance

Liquid

Concentration

1 mg/mL

Storage

MYCT1 antibody can be stored at 4°C for three months and -20°C, stable for up to one year. As with all antibodies care should be taken to avoid repeated freeze thaw cycles. Antibodies should not be exposed to prolonged high temperatures.

Note

For research use only

Application notes

MYCT1 antibody can be used for detection of MYCT1 by Western blot at 1 - 2 µg/mL. Antibody validated: Western Blot in rat samples. All other applications and species not yet tested.

Isotype

IgG

Clonality

Polyclonal

MW

26 kDa

Uniprot ID

[Q8N699](#)

NCBI

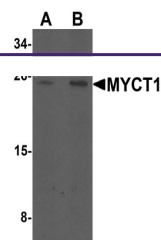
[NP_079383](#)

Dilution Range

MYCT1 antibody can be used for detection of MYCT1 by Western blot at 1 - 2 µg/mL. Antibody validated: Western Blot in rat samples. All other applications and species not yet tested.

Expiration Date

12 months from date of receipt.



Western blot analysis of MYCT1 in rat lu...