

Product Datasheet

NLRP2 Antibody (orb1238305)

Description

NLRP2 Antibody

Species/Host

Rabbit

Reactivity

Human, Mouse, Rat

Conjugation

Unconjugated

Tested

ELISA, WB

Applications

Immunogen

NALP2 antibody was raised against a peptide corresponding to 12 amino acids near the carboxy terminus of human NALP2. The immunogen is located within the last 50 amino acids of NALP2.

Target

NLRP2

Preservatives

NALP2 Antibody is supplied in PBS containing 0.02% sodium azide.

Form/Appearance

Liquid

Concentration

1 mg/mL

Storage

NALP2 antibody can be stored at 4°C for three months and -20°C, stable for up to one year. As with all antibodies care should be taken to avoid repeated freeze thaw cycles. Antibodies should not be exposed to prolonged high temperatures.

Note

For research use only

Application notes

NALP2 antibody can be used for detection of NALP2 by Western blot at 1 to 2 µg/mL. Antibody validated: Western Blot in human samples. All other applications and species not yet tested.

Isotype

IgG

Clonality

Polyclonal

Uniprot ID

[Q9NX02](#)

NCBI

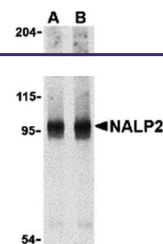
[NP_060322](#)

Dilution Range

NALP2 antibody can be used for detection of NALP2 by Western blot at 1 to 2 µg/mL. Antibody validated: Western Blot in human samples. All other applications and species not yet tested.

Expiration Date

12 months from date of receipt.



Western blot analysis of NALP2 in PC-3 c...