

## Product Datasheet

### NANOS2 Antibody (orb1238302)

## Description

## NANOS2 Antibody

### Species/Host

Rabbit

### Reactivity

Human, Mouse, Rat

### Conjugation

Unconjugated

### Tested

ELISA, WB

### Applications

### Immunogen

Nanos2 antibody was raised against a 13 amino acid synthetic peptide near the carboxy terminus of the human Nanos2. The immunogen is located within the last 50 amino acids of Nanos2.

### Target

NANOS2

### Preservatives

Nanos2 Antibody is supplied in PBS containing 0.02% sodium azide.

### Form/Appearance

Liquid

### Concentration

1 mg/mL

### Storage

Nanos2 antibody can be stored at 4°C for three months and -20°C, stable for up to one year. As with all antibodies care should be taken to avoid repeated freeze thaw cycles. Antibodies should not be exposed to prolonged high temperatures.

### Note

For research use only

### Application notes

Nanos2 antibody can be used for detection of Nanos2 by Western blot at 2 to 4 µg/mL. Antibody validated: Western Blot in human samples. All other applications and species not yet tested.

### Isotype

IgG

### Clonality

Polyclonal

### Uniprot ID

[P60321](#)

### NCBI

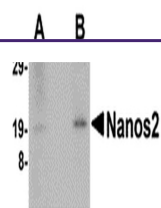
[P60321](#)

### Dilution Range

Nanos2 antibody can be used for detection of Nanos2 by Western blot at 2 to 4 µg/mL. Antibody validated: Western Blot in human samples. All other applications and species not yet tested.

### Expiration Date

12 months from date of receipt.



Western blot analysis of Nanos2 in human...