

Product Datasheet

NOD1 Antibody (orb1238299)

Description

NOD1 Antibody

250-

Species/Host

Rabbit

Reactivity

Human, Mouse, Rat

Conjugation

Unconjugated

Tested

ELISA, WB

Applications

Immunogen

NOD1 antibody was raised against a 16 amino acid synthetic peptide near the carboxy end of human NOD1. The immunogen is located within the last 50 amino acids of NOD1.

Target

NOD1

Preservatives

NOD1 Antibody is supplied in PBS containing 0.02% sodium azide.

Form/Appearance

Liquid

Concentration

1 mg/mL

Storage

NOD1 antibody can be stored at 4°C for three months and -20°C, stable for up to one year. As with all antibodies care should be taken to avoid repeated freeze thaw cycles. Antibodies should not be exposed to prolonged high temperatures.

Note

For research use only

Application notes

NOD1 antibody can be used for detection of NOD1 by Western blot at 1 µg/mL. Antibody validated: Western Blot in mouse samples. All other applications and species not yet tested.

Isotype

IgG

Clonality

Polyclonal

Uniprot ID

[Q9Y239](#)

NCBI

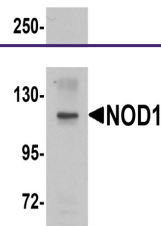
[Q9Y239](#)

Dilution Range

NOD1 antibody can be used for detection of NOD1 by Western blot at 1 µg/mL. Antibody validated: Western Blot in mouse samples. All other applications and species not yet tested.

Expiration Date

12 months from date of receipt.



Western blot analysis of NOD1 in EL4 cel...