

## Product Datasheet

### WDR74 Antibody (orb1238296)

## Description

WDR74 Antibody

### Species/Host

Rabbit

### Reactivity

Human, Rat

### Conjugation

Unconjugated

### Tested

ELISA, WB

### Applications

### Immunogen

NSA1 antibody was raised against a 18 amino acid synthetic peptide near the amino terminus of human NSA1. The immunogen is located within amino acids 90 - 140 of NSA1.

### Target

WDR74

### Preservatives

NSA1 Antibody is supplied in PBS containing 0.02% sodium azide.

### Form/Appearance

Liquid

### Concentration

1 mg/mL

### Storage

NSA1 antibody can be stored at 4°C for three months and -20°C, stable for up to one year. As with all antibodies care should be taken to avoid repeated freeze thaw cycles. Antibodies should not be exposed to prolonged high temperatures.

### Note

For research use only

### Application notes

NSA1 antibody can be used for detection of NSA1 by Western blot at 1 - 2 µg/mL. For immunofluorescence start at 20 µg/mL. Antibody validated: Western Blot in rat samples. All other applications and species not yet tested.

### Isotype

IgG

### Clonality

Polyclonal

### Uniprot ID

[Q6RFH5](#)

### NCBI

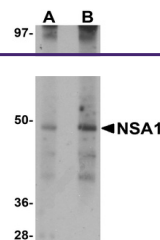
[Q6RFH5](#)

### Dilution Range

NSA1 antibody can be used for detection of NSA1 by Western blot at 1 - 2 µg/mL. For immunofluorescence start at 20 µg/mL. Antibody validated: Western Blot in rat samples. All other applications and species not yet tested.

### Expiration Date

12 months from date of receipt.



Western blot analysis of NSA1 in rat liv...