

Product Datasheet

FAM120B Antibody (orb1238287)

Description

FAM120B Antibody

Species/Host

Rabbit

Reactivity

Human, Mouse, Rat

Conjugation

Unconjugated

Tested

ELISA, WB

Applications

Immunogen

PGCC1 antibody was raised against an 18 amino acid synthetic peptide from near the carboxy terminus of human PGCC1. The immunogen is located within the last 50 amino acids of PGCC1.

Target

FAM120B

Preservatives

PGCC1 Antibody is supplied in PBS containing 0.02% sodium azide.

Form/Appearance

Liquid

Concentration

1 mg/mL

Storage

PGCC1 antibody can be stored at 4°C for three months and -20°C, stable for up to one year. As with all antibodies care should be taken to avoid repeated freeze thaw cycles. Antibodies should not be exposed to prolonged high temperatures.

Note

For research use only

Application notes

PGCC1 antibody can be used for detection of PGCC1 by Western blot at 0.5 - 1 µg/mL. Antibody validated: Western Blot in rat samples. All other applications and species not yet tested.

Isotype

IgG

Clonality

Polyclonal

Uniprot ID

[Q96EK7](#)

NCBI

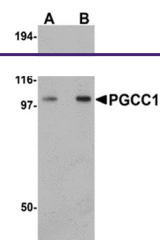
[Q96EK7](#)

Dilution Range

PGCC1 antibody can be used for detection of PGCC1 by Western blot at 0.5 - 1 µg/mL. Antibody validated: Western Blot in rat samples. All other applications and species not yet tested.

Expiration Date

12 months from date of receipt.



Western blot analysis of PGCC1 in rat th...