

Product Datasheet

PRTFDC1 Antibody (orb1238277)

Description

PRTFDC1 Antibody

Species/Host

Rabbit

Reactivity

Human, Rat

Conjugation

Unconjugated

Tested

ELISA, WB

Applications

Immunogen

PRTFDC1 antibody was raised against a 14 amino acid synthetic peptide from near the center of human PRTFDC1. The immunogen is located within amino acids 90 - 140 of PRTFDC1.

Target

PRTFDC1

Preservatives

PRTFDC1 Antibody is supplied in PBS containing 0.02% sodium azide.

Form/Appearance

Liquid

Concentration

1 mg/mL

Storage

PRTFDC1 antibody can be stored at 4°C for three months and -20°C, stable for up to one year. As with all antibodies care should be taken to avoid repeated freeze thaw cycles. Antibodies should not be exposed to prolonged high temperatures.

Note

For research use only

Application notes

PRTFDC1 antibody can be used for detection of PRTFDC1 by Western blot at 1 µg/mL. Antibody validated: Western Blot in human samples. All other applications and species not yet tested.

Isotype

IgG

Clonality

Polyclonal

Uniprot ID

[Q9NRG1](#)

NCBI

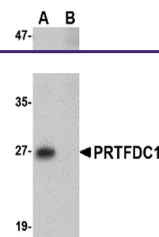
[NP_064585](#)

Dilution Range

PRTFDC1 antibody can be used for detection of PRTFDC1 by Western blot at 1 µg/mL. Antibody validated: Western Blot in human samples. All other applications and species not yet tested.

Expiration Date

12 months from date of receipt.



Western blot analysis of PRTFDC1 in huma...