

Product Datasheet

PTCHD2 Antibody (orb1238275)

Description

PTCHD2 Antibody

Species/Host

Rabbit

Reactivity

Human

Conjugation

Unconjugated

Tested

ELISA, IHC-P

Applications
Immunogen

PTCHD2 antibody was raised against a 14 amino acid synthetic peptide from near the carboxy terminus of human PTCHD2. The immunogen is located within amino acids 1240 - 1290 of PTCHD2.

Target

PTCHD2

Preservatives

PTCHD2 Antibody is supplied in PBS containing 0.02% sodium azide.

Form/Appearance

Liquid

Concentration

1 mg/mL

Storage

PTCHD2 antibody can be stored at 4°C for three months and -20°C, stable for up to one year. As with all antibodies care should be taken to avoid repeated freeze thaw cycles. Antibodies should not be exposed to prolonged high temperatures.

Note

For research use only

Application notes

PTCHD2 antibody can be used for detection of PTCHD2 by immunohistochemistry at 5 µg/mL. Antibody validated: Immunohistochemistry in human samples. All other applications and species not yet tested.

Isotype

IgG

Clonality

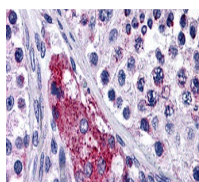
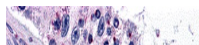
Polyclonal

Uniprot ID
[Q9P2K9](#)
NCBI
[Q9P2K9](#)
Dilution Range

PTCHD2 antibody can be used for detection of PTCHD2 by immunohistochemistry at 5 µg/mL. Antibody validated: Immunohistochemistry in human samples. All other applications and species not yet tested.

Expiration Date

12 months from date of receipt.



Immunohistochemistry of PTCHD2 in human

...