

## Product Datasheet

### PTEN Antibody (orb1238273)

## Description

## PTEN Antibody

### Species/Host

Rabbit

### Reactivity

Human, Mouse

### Conjugation

Unconjugated

### Tested

ELISA, IP, WB

### Applications

### Immunogen

PTEN antibody was raised against a 16 amino acid synthetic peptide from near the carboxy terminus of human PTEN. The immunogen is located within the last 50 amino acids of PTEN.

### Target

PTEN

### Preservatives

PTEN Antibody is supplied in PBS containing 0.02% sodium azide.

### Form/Appearance

Liquid

### Concentration

1 mg/mL

### Storage

PTEN antibody can be stored at 4°C for three months and -20°C, stable for up to one year. As with all antibodies care should be taken to avoid repeated freeze thaw cycles. Antibodies should not be exposed to prolonged high temperatures.

### Note

For research use only

### Application notes

PTEN antibody can be used for the detection of PTEN by Western blot at 1 µg/mL. Antibody validated: Western Blot in human samples. All other applications and species not yet tested.

### Isotype

IgG

### Clonality

Polyclonal

### Uniprot ID

[P60484](#)

### NCBI

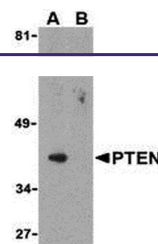
[P60484](#)

### Dilution Range

PTEN antibody can be used for the detection of PTEN by Western blot at 1 µg/mL. Antibody validated: Western Blot in human samples. All other applications and species not yet tested.

### Expiration Date

12 months from date of receipt.



Western blot analysis of PTEN in PC-3 ce...