

Product Datasheet

CD48 Antibody (orb1238208)

Description

CD48 Antibody

Species/Host

Rabbit

Reactivity

Human, Mouse, Rat

Conjugation

Unconjugated

Tested

ELISA, WB

Applications

Immunogen

SLAMF2 antibody was raised against a 19 amino acid synthetic peptide near the center of human SLAMF2. The immunogen is located within amino acids 90 - 140 of SLAMF2.

Target

CD48

Preservatives

SLAMF2 Antibody is supplied in PBS containing 0.02% sodium azide.

Form/Appearance

Liquid

Concentration

1 mg/mL

Storage

SLAMF2 antibody can be stored at 4°C for three months and -20°C, stable for up to one year. As with all antibodies care should be taken to avoid repeated freeze thaw cycles. Antibodies should not be exposed to prolonged high temperatures.

Note

For research use only

Application notes

SLAMF2 antibody can be used for detection of SLAMF2 by Western blot at 1 - 2 µg/mL. Antibody validated: Western Blot in rat samples. All other applications and species not yet tested.

Isotype

IgG

Clonality

Polyclonal

Uniprot ID

[P09326](#)

NCBI

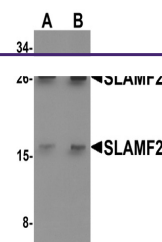
[NP_1769](#)

Dilution Range

SLAMF2 antibody can be used for detection of SLAMF2 by Western blot at 1 - 2 µg/mL. Antibody validated: Western Blot in rat samples. All other applications and species not yet tested.

Expiration Date

12 months from date of receipt.



Western blot analysis of SLAMF2 in rat l...