

## Product Datasheet

### SPATA18 Antibody (orb1238199)

## Description

## SPATA18 Antibody

### Species/Host

Gallus

### Reactivity

Human, Mouse, Rat

### Conjugation

Unconjugated

### Tested

ELISA, WB

### Applications

### Immunogen

SPATA18 antibody was raised against a 19 amino acid synthetic peptide near the amino terminus of human SPATA18. The immunogen is located within amino acids 90 - 140 of SPATA18.

### Target

SPATA18

### Preservatives

SPATA18 Antibody is supplied in PBS containing 0.02% sodium azide.

### Form/Appearance

Liquid

### Concentration

1 mg/mL

### Storage

SPATA18 antibody can be stored at 4°C for three months and -20°C, stable for up to one year. As with all antibodies care should be taken to avoid repeated freeze thaw cycles. Antibodies should not be exposed to prolonged high temperatures.

### Note

For research use only

### Application notes

SPATA18 antibody can be used for detection of SPATA18 by Western blot at 1 µg/mL. Antibody validated: Western Blot in rat samples. All other applications and species not yet tested.

### Isotype

IgY

### Clonality

Polyclonal

### Uniprot ID

[Q8TC71](#)

### NCBI

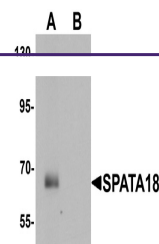
[NP\\_660306](#)

### Dilution Range

SPATA18 antibody can be used for detection of SPATA18 by Western blot at 1 µg/mL. Antibody validated: Western Blot in rat samples. All other applications and species not yet tested.

### Expiration Date

12 months from date of receipt.



Western blot analysis of SPATA18 in rat ...