

## Product Datasheet

### TBC1D1 Antibody (orb1238182)

## Description

TBC1D1 Antibody

### Species/Host

Rabbit

### Reactivity

Human

### Conjugation

Unconjugated

### Tested

ELISA, WB

### Applications

### Immunogen

TBC1D1 antibody was raised against a 22 amino acid synthetic peptide from near the carboxy terminus of human TBC1D1. The immunogen is located within the last 50 amino acids of TBC1D1.

### Target

TBC1D1

### Preservatives

TBC1D1 Antibody is supplied in PBS containing 0.02% sodium azide.

### Form/Appearance

Liquid

### Concentration

1 mg/mL

### Storage

TBC1D1 antibody can be stored at 4°C for three months and -20°C, stable for up to one year. As with all antibodies care should be taken to avoid repeated freeze thaw cycles. Antibodies should not be exposed to prolonged high temperatures.

### Note

For research use only

### Application notes

TBC1D1 antibody can be used for detection of TBC1D1 by Western blot at 2 µg/mL. Antibody validated: Western Blot in human samples. All other applications and species not yet tested.

### Isotype

IgG

### Clonality

Polyclonal

### MW

Predicted: 128 kDa Observed: 140 kDa

### Uniprot ID

[Q86TI0](#)

### NCBI

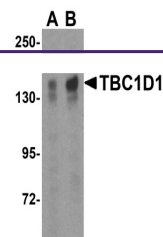
[NP\\_055988](#)

### Dilution Range

TBC1D1 antibody can be used for detection of TBC1D1 by Western blot at 2 µg/mL. Antibody validated: Western Blot in human samples. All other applications and species not yet tested.

### Expiration Date

12 months from date of receipt.



Western blot analysis of TBC1D1 expressi...