

Product Datasheet

ZMIZ2 Antibody (orb1238132)

Description

ZMIZ2 Antibody

Species/Host

Rabbit

Reactivity

Human, Mouse

Conjugation

Unconjugated

Tested

ELISA, WB

Applications

Immunogen

ZIMP7 antibody was raised against a 17 amino acid synthetic peptide near the center of human ZIMP7. The immunogen is located within amino acids 270 - 320 of ZIMP7.

Target

ZMIZ2

Preservatives

ZIMP7 Antibody is supplied in PBS containing 0.02% sodium azide.

Form/Appearance

Liquid

Concentration

1 mg/mL

Storage

ZIMP7 antibody can be stored at 4°C for three months and -20°C, stable for up to one year. As with all antibodies care should be taken to avoid repeated freeze thaw cycles. Antibodies should not be exposed to prolonged high temperatures.

Note

For research use only

Application notes

ZIMP7 antibody can be used for detection of ZIMP7 by Western blot at 0.25 - 0.5 µg/mL. Antibody validated: Western Blot in mouse samples. All other applications and species not yet tested.

Isotype

IgG

Clonality

Polyclonal

Uniprot ID

[Q8NF64](#)

NCBI

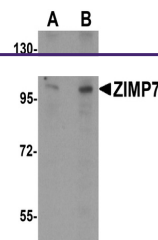
[Q8NF64](#)

Dilution Range

ZIMP7 antibody can be used for detection of ZIMP7 by Western blot at 0.25 - 0.5 µg/mL. Antibody validated: Western Blot in mouse samples. All other applications and species not yet tested.

Expiration Date

12 months from date of receipt.



Western blot analysis of ZIMP7 in A20 ce...