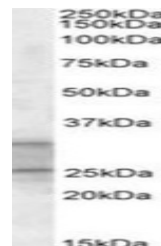


## Product Datasheet

### E2F6 Peptide (orb1236190)

<b>Description</b>	E2F6 Peptide
<b>Tested Applications</b>	Blocking
<b>Target</b>	E2F6
<b>Preservatives</b>	E2F6 peptide is supplied as 100 µg of dried peptide. When the peptide is reconstituted in 200 µL water, the concentration will be 0.5 mg/mL.
<b>Form/Appearance</b>	Lyophilized
<b>Storage</b>	Store at -20°C. When reconstituted minimize freezing and thawing.
<b>Note</b>	For research use only
<b>Application notes</b>	E2F6 Peptide is used for blocking the activity of E2F6 antibody (catalog number 42-237). The E2F6 antibody ships at 0.5 mg/mL and the E2F6 Peptide ships as a 100 µg pellet. When peptide is reconstituted in 200 µL water, the concentration will be 0.5 mg/mL, identical to that of the antibody. The best starting ratio would be 1:1 (which means molar excess of peptide relative to antibody when identical volumes are mixed). Mix equal volume of peptide and antibody at the required dilution and leave at ambient temperature for 20 minutes. Then incubate and develop in parallel two blots: one with the antibody and one with the antibody which has been pre-absorbed with the provided peptide.
<b>Uniprot ID</b>	<b>O75461</b>
<b>NCBI</b>	<b>NP_937987.2</b>
<b>Expiration Date</b>	6 months from date of receipt.



Western blot analysis of E2F6 in Human S...