

## Product Datasheet

### PDL1 ELISA Matched Antibody Pair (Risk Free) (orb1227431)

**Description** PDL1 ELISA Matched Antibody Pair (Risk Free)

**Species/Host** Mouse

**Reactivity** Human

**Tested Applications** ELISA

**Immunogen** PD-L1 antibodies were raised against the extracellular domain of human PD-L1.

**Preservatives** PBS containing 0.02% sodium azide.

**Form/Appearance** Liquid

**Concentration** Antibody 1 mg/mL

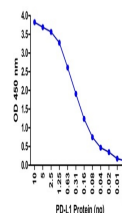
**Storage** Antibodies can be stored at 4°C for three months and -20°C, stable for up to one year. As with all antibodies care should be taken to avoid repeated freeze thaw cycles. Antibodies should not be exposed to prolonged high temperatures.

**Note** For research use only

**Isotype** IgG1

**Clonality** Monoclonal

**Expiration Date** Please enquire.



A sandwich ELISA was performed using the...