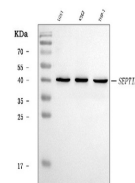


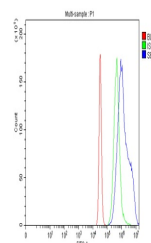
## Product Datasheet

### SEPT5/SEPTIN5 Antibody (orb1184705)

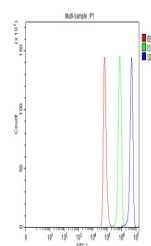
|                            |  |
|----------------------------|--|
| <b>Description</b>         | SEPT5/SEPTIN5 Antibody   |
| <b>Species/Host</b>        | Rabbit   |
| <b>Reactivity</b>          | Human, Rat   |
| <b>Conjugation</b>         | Unconjugated   |
| <b>Tested Applications</b> | FC, WB   |
| <b>Immunogen</b>           | A synthetic peptide corresponding to a sequence of human SEPT5/SEPTIN5 (HYENYRAHCIQMSTSLTQD).  |
| <b>Form/Appearance</b>     | Lyophilized  |
| <b>Concentration</b>       | Adding 0.2 ml of distilled water will yield a concentration of 500 µg/ml.  |
| <b>Storage</b>             | At -20°C for one year from date of receipt. After reconstitution, at 4°C for one month. It can also be aliquotted and stored frozen at -20°C for six months. Avoid repeated freezing and thawing.                                      |
| <b>Note</b>                | For research use only  |
| <b>Application notes</b>   | Tested Species: In-house tested species with positive results. Other applications have not been tested. Optimal dilutions should be determined by end users. Adding 0.2 ml of distilled water will yield a concentration of 500 µg/ml. |
| <b>Isotype</b>             | Rabbit IgG   |
| <b>Clonality</b>           | Polyclonal   |
| <b>MW</b>                  | 42 kDa   |
| <b>Uniprot ID</b>          | <b>Q99719</b>  |
| <b>Dilution Range</b>      | Western blot, 0.25-0.5 µg/ml/ml, Human Flow Cytometry, 1-3 µg/ml/1x10 <sup>6</sup> cells, Human, Rat   |
| <b>Expiration Date</b>     | 12 months from date of receipt.  |



Western blot analysis of SEPT5/SEPTIN5 u...



Flow Cytometry analysis of K562 cells us...



Flow Cytometry analysis of NRK cells us...