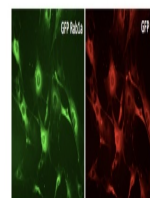


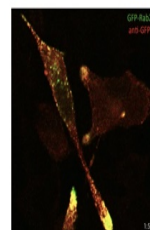
## Product Datasheet

### GFP antibody (orb11604)

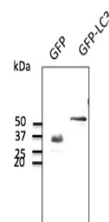
<b>Description</b>	Goat polyclonal antibody to GFP (green fluorescent protein). GFP is a protein composed of 238 amino ...
<b>Species/Host</b>	Goat
<b>Conjugation</b>	Unconjugated
<b>Tested Applications</b>	IF, IHC-Fr, IHC-P, WB
<b>Immunogen</b>	Purified recombinant peptide produced in E. coli
<b>Target</b>	In 293HEK cells transfected with cds plasmid detects a band of 27 kDa by Western blot. This antibody does recognize YFP and CFP and does not recognize RFP and mCherry fluorescent proteins
<b>Preservatives</b>	PBS, 20% glycerol and 0.05% sodium azide
<b>Form/Appearance</b>	PBS, 20% glycerol and 0.05% sodium azide
<b>Concentration</b>	2 mg/ml
<b>Storage</b>	Store at -20 C for long-term storage. Store at 2-8 C for up to one month
<b>Note</b>	For research use only
<b>Application notes</b>	The antibody solution should be gently mixed before use.
<b>Isotype</b>	IgG
<b>Clonality</b>	Polyclonal
<b>Purity</b>	This antibody is epitope-affinity purified from goat antiserum
<b>Dilution Range</b>	WB:1:500-1:5,000, IF:1:50-1:1,000, IHC-P:1:50-1:1,000, IHC-F:1:50-1:1,000, IEM:1:50-1:1,000
<b>Expiration Date</b>	12 months from date of receipt.



Primary fibroblasts transfected with ad G...



AtT-20 transfected with GFP-Rab27a and i...



Western blot analysis of HEK293 transfer...