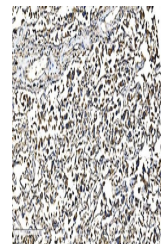


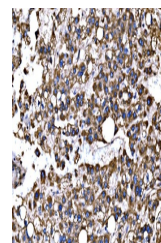
Product Datasheet

Bim/BCL2L11 Antibody (orb1098118)

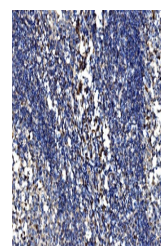
Description	Bim/BCL2L11 Antibody
Species/Host	Rabbit
Reactivity	Human, Mouse
Conjugation	Unconjugated
Tested Applications	FC, IHC, WB
Immunogen	A synthetic peptide corresponding to a sequence of human Bim/BCL2L11 (AEDHPRMVILRLRYIVRLV).
Form/Appearance	Lyophilized
Concentration	Adding 0.2 ml of distilled water will yield a concentration of 500 µg/ml.
Storage	At -20°C for one year from date of receipt. After reconstitution, at 4°C for one month. It can also be aliquotted and stored frozen at -20°C for six months. Avoid repeated freezing and thawing.
Note	For research use only
Application notes	Tested Species: In-house tested species with positive results. Other applications have not been tested. Optimal dilutions should be determined by end users. Adding 0.2 ml of distilled water will yield a concentration of 500 µg/ml.
Isotype	Rabbit IgG
Clonality	Polyclonal
MW	28 kDa
Uniprot ID	O43521
Dilution Range	Western blot, 0.1-0.25 µg/ml, Human, Mouse Immunohistochemistry(Paraffin-embedded Section), 2-5 µg/ml, Human Flow Cytometry, 1-3 µg/1x10 ⁶ cells, Human
Expiration Date	12 months from date of receipt.



IHC analysis of Bim/BCL2L11 using anti-B...



IHC analysis of Bim/BCL2L11 using anti-B...



IHC analysis of Bim/BCL2L11 using anti-B...