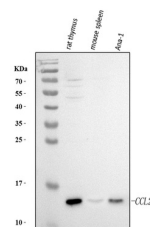


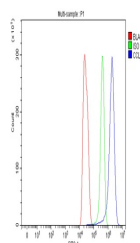
Product Datasheet

Ccl21 Antibody (orb1098035)

Description	Ccl21 Antibody
Species/Host	Rabbit
Reactivity	Mouse, Rat
Conjugation	Unconjugated
Tested Applications	ELISA, FC, WB
Immunogen	E.coli-derived rat Ccl21 recombinant protein (Position: S24-Q133).
Form/Appearance	Lyophilized
Concentration	Adding 0.2 ml of distilled water will yield a concentration of 500 µg/ml.
Storage	At -20°C for one year from date of receipt. After reconstitution, at 4°C for one month. It can also be aliquotted and stored frozen at -20°C for six months. Avoid repeated freezing and thawing.
Note	For research use only
Application notes	Tested Species: In-house tested species with positive results. Other applications have not been tested. Optimal dilutions should be determined by end users. Adding 0.2 ml of distilled water will yield a concentration of 500 µg/ml.
Isotype	Rabbit IgG
Clonality	Polyclonal
MW	15 kDa
Uniprot ID	Q5RJN3
Dilution Range	Western blot, 0.25-0.5 µg/ml, Mouse, Rat Flow Cytometry, 1-3 µg/1x10 ⁶ cells, Rat Direct ELISA, 0.1-0.5 µg/ml, Rat
Expiration Date	12 months from date of receipt.



Western blot analysis of Ccl21 using ant...



Flow Cytometry analysis of C6 cells usin...