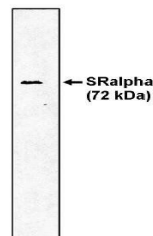


Product Datasheet

SR alpha antibody (orb109589)

Description	Sheep polyclonal to SR alpha
Species/Host	Sheep
Reactivity	Canine
Conjugation	Unconjugated
Tested Applications	ELISA, IHC-P, WB
Immunogen	The antibody to SRalpha was raised against a recombinant protein corresponding to amino acids 39-295 which includes part of the amino terminal SRbeta binding region and the hinge region between it and the carboxyl-terminal GTPase domain.
Preservatives	Provided as solution in phosphate buffered saline with 0.08% sodium azide
Form/Appearance	Provided as solution in phosphate buffered saline with 0.08% sodium azide
Concentration	See vial for concentration
Storage	Product should be stored at -20°C. Aliquot to avoid freeze/thaw cycles
Note	For research use only
Application notes	Detects SRalpha by Western blot analysis at 1 to 5 µg/ml. Also can be used to immunoprecipitate both subunits of SRP receptors under non-denaturing conditions. Optimal concentration should be evaluated by serial dilutions.
Isotype	IgG
Uniprot ID	P06625
Hazard Information	This product is intended FOR RESEARCH USE ONLY, and FOR TESTS IN VITRO, not for use in diagnostic or therapeutic procedures involving humans or animals.
Expiration Date	12 months from date of receipt.



Western blot analysis of canine microsom...