

Product Datasheet

M13 bacteriophage antibody (Biotin) (orb109588)

Description Antibody specific for the M13 bacteriophage protein coat, amongst others the g3p protein.

Species/Host Mouse

Conjugation Biotin

Tested Applications ELISA, FACS, IHC-P, WB

Immunogen M13 phage coat proteins.

Preservatives Provided as solution in phosphate buffered saline with 0.08% sodium azide

Form/Appearance Provided as solution in phosphate buffered saline with 0.08% sodium azide

Concentration See vial for concentration

Storage Product should be stored at -20°C. Aliquot to avoid freeze/thaw cycles

Note For research use only

Application notes Antibody can be used for immunohistochemistry, Western blot (1-5 µg/ml), Flow cytometry (1 µg/106 cells) and ELISA. Optimal concentration should be evaluated by serial dilutions.

Isotype IgG3

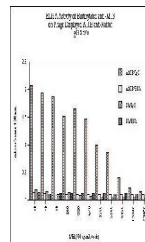
Clonality Monoclonal

Source Hybridoma produced by the fusion of splenocytes from mice immunized with isolated M13 phage coat proteins and mouse myeloma cells.

Uniprot ID **P69168**

Hazard Information This product is intended FOR RESEARCH USE ONLY, and FOR TESTS IN VITRO, not for use in diagnostic or therapeutic procedures involving humans or animals.

Expiration Date 12 months from date of receipt.



Line graph illustrates about the Ag-Ab r...