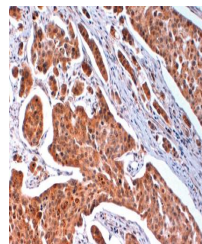


Product Datasheet

Histone H2a.x antibody (orb109575)

Description	Rabbit polyclonal to Histone H2a.x
Species/Host	Rabbit
Reactivity	Human
Conjugation	Unconjugated
Tested Applications	ELISA, IHC-P, WB
Immunogen	Synthetic peptide derived from human histone H2a.x protein. Sequence is unphosphorylated version of peptide used for Cat. No. X2752P
Preservatives	Provided as solution in phosphate buffered saline with 0.08% sodium azide
Form/Appearance	Provided as solution in phosphate buffered saline with 0.08% sodium azide
Concentration	See vial for concentration
Storage	Product should be stored at -20°C. Aliquot to avoid freeze/thaw cycles
Note	For research use only
Application notes	Antibody can be used for immunohistochemical staining (1-5 µg/ml). Optimal concentration should be evaluated by serial dilutions.
Isotype	IgG
Uniprot ID	P16104
Hazard Information	This product is intended FOR RESEARCH USE ONLY, and FOR TESTS IN VITRO, not for use in diagnostic or therapeutic procedures involving humans or animals.
Expiration Date	12 months from date of receipt.



Immunohistochemical staining of human bl...