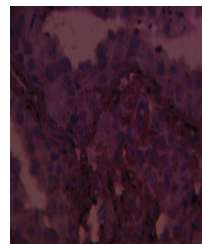


Product Datasheet

ERCC1 antibody (orb109561)

Description	Rabbit polyclonal to ERCC1
Species/Host	Rabbit
Reactivity	Human
Conjugation	Unconjugated
Tested Applications	ELISA, IHC-P, WB
Immunogen	Synthetic peptide derived from human ERCC1 protein
Preservatives	Provided as solution in phosphate buffered saline with 0.08% sodium azide
Form/Appearance	Provided as solution in phosphate buffered saline with 0.08% sodium azide
Concentration	See vial for concentration
Storage	Product should be stored at -20°C. Aliquot to avoid freeze/thaw cycles
Note	For research use only
Application notes	This antibody can be used for Western blotting (5-10 µg/ml) and immunohistochemistry on formalin/paraffin sections (5-10 µg/ml). Optimal concentration should be evaluated by serial dilutions.
Isotype	Ig
Uniprot ID	P07992
Hazard Information	This product is intended FOR RESEARCH USE ONLY, and FOR TESTS IN VITRO, not for use in diagnostic or therapeutic procedures involving humans or animals.
Expiration Date	12 months from date of receipt.



Immunohistochemical staining of normal h...