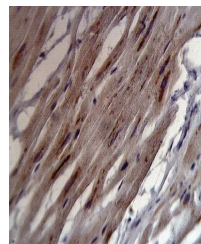


Product Datasheet

Acid Ceramidase 1 antibody (orb109530)

Description	Rabbit polyclonal to Acid Ceramidase 1
Species/Host	Rabbit
Reactivity	Human
Conjugation	Unconjugated
Tested Applications	ELISA, IHC, WB
Immunogen	Synthetic peptide derived from the C terminal region of the ASAH1 protein.
Preservatives	Provided as solution in phosphate buffered saline with 0.08% sodium azide
Form/Appearance	Provided as solution in phosphate buffered saline with 0.08% sodium azide
Concentration	See vial for concentration
Storage	Product should be stored at -20°C. Aliquot to avoid freeze/thaw cycles
Note	For research use only
Application notes	Antibody can be used for Western blotting (1-5 µg/ml) and Immunohistochemistry on paraffin-embedded tissues (10 µg/ml). Optimal concentration should be evaluated by serial dilutions.
Isotype	IgG
Uniprot ID	Q9EQJ6 , Q9WV54 , Q53H01
Hazard Information	This product is intended FOR RESEARCH USE ONLY, and FOR TESTS IN VITRO, not for use in diagnostic or therapeutic procedures involving humans or animals.
Expiration Date	12 months from date of receipt.



Immunohistochemical staining of human he...