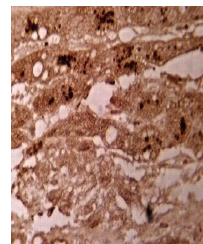


Product Datasheet

GPC3 antibody (orb109425)

Description	Sheep polyclonal antibody to GPC3
Species/Host	Sheep
Reactivity	Human
Conjugation	Unconjugated
Tested Applications	IHC-P, WB
Immunogen	C terminal recombinant protein (~70aa) which does not overlap with clone 1G12 epitope)
Preservatives	Provided as solution in phosphate buffered saline with 0.08% sodium azide
Form/Appearance	Provided as solution in phosphate buffered saline with 0.08% sodium azide
Concentration	See vial for concentration
Storage	Product should be stored at -20°C. Aliquot to avoid freeze/thaw cycles
Note	For research use only
Application notes	Antibody can be used for immunohistochemistry on paraffin-embedded tissues (10 µg/ml) and Western blotting (5-10 µg/ml). Optimal concentration should be evaluated by serial dilutions.
Isotype	IgG
Uniprot ID	P51654
Hazard Information	This product is intended FOR RESEARCH USE ONLY, and FOR TESTS IN VITRO, not for use in diagnostic or therapeutic procedures involving humans or animals.
Expiration Date	12 months from date of receipt.



Immunohistochemical staining of human he...